

T631A,B,C Farm-O-Stat Airswitch Controller

SPECIFICATION DATA



APPLICATION

T631 controllers provide line voltage control of heating, cooling, and ventilation systems in farm buildings or storage areas. Typical applications include:

- Barns
- Brooder houses
- Poultry houses
- Milk houses
- Crop storage houses

FEATURES

The T631A-C Farm-o-stat airswitch controller provides the following features:

- Slots in front and bottom of case for maximum air circulation over the coiled sensing element.
- Rugged steel case treated to resist corrosion.
- Dependable switching provided by soft snap switch(es) permanently sealed against contamination.
- Temperature setting knob and scale on front of controller.
- Coiled cooper tube sensing element

MODLES

Tradeline Model

T631C Airswitch Controller: For temperature or ventilation control, gray finish, spdt switching. Rated for 1 hp (0.7 kW). Packed with cross reference label and special instruction sheet.

Standard Models

T631A Farm-O-Stat Controller: For control of barn ventilation, red finish, spdt switching.

T631B Farm-O-Stat Controller: For control of barn ventilation, red finish, two spdt switches.

T631C Airswitch Controller: For temperature or ventilation control, gray finish, spdt switching.

NOTE: For weatherproof Farm-O-Stat Controller in NEMA 4X enclosure, use T631F,G. See specification sheet, form 60-2509.



Table 1. T631A, B, C Selection Guide

Product Number	Setpoint Temp. Range		Maximum Operating Temp.		Differential Temp.		Interstage Differential Temp.		Output	Voltage	Contact Ratings		
	(F)	(C)	(F)	(C)	(F)	(C)	(F)	(C)			(24 Vac)	(120 Vac)	(240 Vac)
T631A1006	35 to 100	–	120	49	2	1.1	–	–	1 SPDT	24 Vac or 120/240 Vac	2.0A AFL	7.4 AFL, 44.4 ALR	3.7 AFL, 22.2 ALR
T631A1022	70 to 140	–	150	67	2	1.1	–	–	1 SPDT	24 Vac or 120/240 Vac	2.0A AFL	7.4 AFL, 44.4 ALR	3.7 AFL, 22.2 ALR
T631A1030	0 to 70	–	125	52	3	1.7	–	–	1 SPDT	24 Vac or 120/240 Vac	2.0A AFL	7.4 AFL, 44.4 ALR	3.7 AFL, 22.2 ALR
T631A1063	-10 to 100	–	125	52	3	1.7	–	–	1 SPDT	24 Vac or 120/240 Vac	2.0A AFL	7.4 AFL, 44.4 ALR	3.7 AFL, 22.2 ALR
T631A1113	35 to 100	–	120	50	3.5	1.9	–	–	1 SPDT (1 hp at 0.7 kW)	120 Vac or 240 Vac	–	16.0 AFL, 96.0 ALR	8.0 AFL, 48.0 ALR
T631A1154	–	0 to 40	120	50	2	1.1	–	–	1 SPDT	24 Vac or 120/240 Vac	2.0A AFL	7.4 AFL, 44.4 ALR	3.7 AFL, 22.2 ALR
T631B1005	35 to 100	–	120	50	2	1.1	3.5	1.9	2 SPDT	120 Vac or 240 Vac	2.0A AFL	7.4 AFL, 44.4 ALR	3.7 AFL, 22.2 ALR
T631B1054	35 to 100	–	120	50	2	1.1	0 - 7 adj.	0 - 4 adj.	2 SPDT (1 hp at 0.7 kW)	120 Vac or 240 Vac	–	16.0 AFL, 96.0 ALR	8.0 AFL, 48.0 ALR
T631C1012	20 to 90	–	125	52	3	1.7	–	–	1 SPDT (1 hp at 0.7 kW)	120 Vac or 240 Vac	–	16.0 AFL, 96.0 ALR	8.0 AFL, 48.0 ALR
T631C1020	70 to 140	–	150	67	2	1.1	–	–	1 SPDT	24 Vac or 120/240 Vac	2.0A AFL	7.4 AFL, 44.4 ALR	3.7 AFL, 22.2 ALR
T631C1038	–	-10 to 30	125	52	3	1.7	–	–	1 SPDT	24 Vac or 120/240 Vac	2.0A AFL	7.4 AFL, 44.4 ALR	3.7 AFL, 22.2 ALR
T631C1046	–	20 to 60	150	67	2	1.1	–	–	1 SPDT	24 Vac or 120/240 Vac	2.0A AFL	7.4 AFL, 44.4 ALR	3.7 AFL, 22.2 ALR
T631C1053	35 to 100	–	120	49	2	1.1	–	–	1 SPDT	120 Vac or 240 Vac	2.0A AFL	7.4 AFL, 44.4 ALR	3.7 AFL, 22.2 ALR
T631C1103 (Tradeline)	-30 to 100	–	125	52	5	2.8	–	–	1 SPDT (1 hp at 0.7 kW)	24 Vac or 120/240 Vac	–	16.0 AFL, 96.0 ALR	8.0 AFL, 48.0 ALR

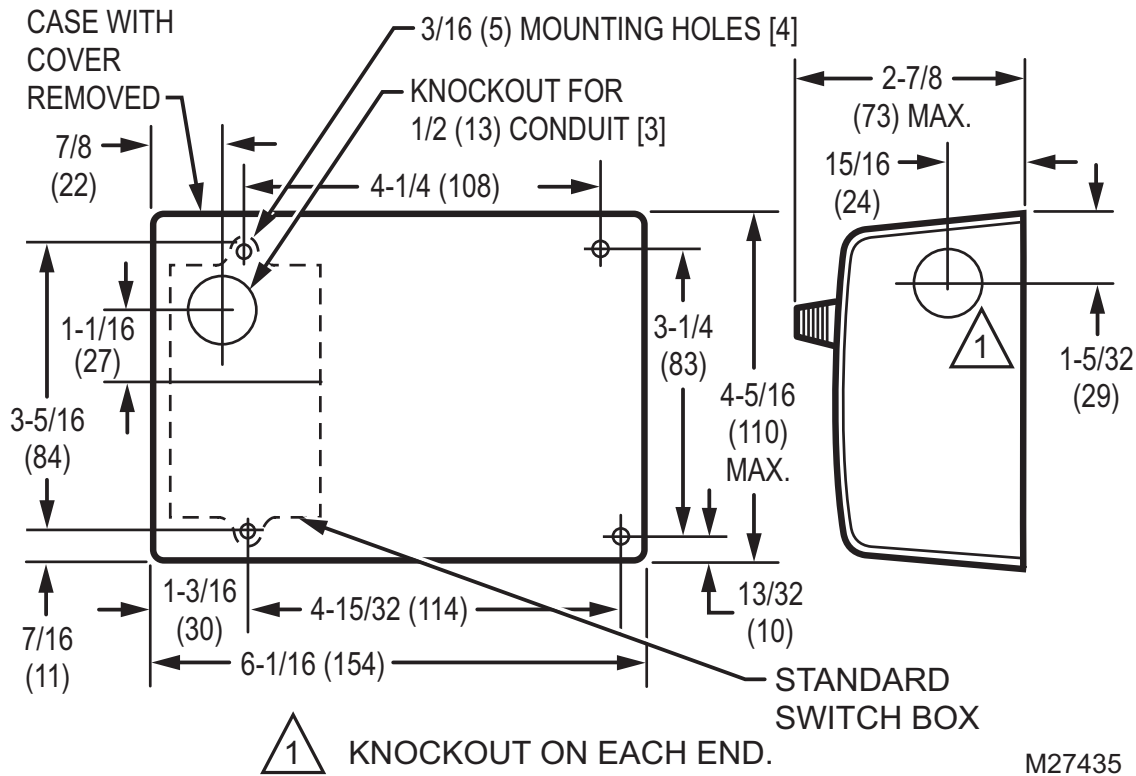


Figure 1. T631 installation dimensions, in in. (mm shown in brackets)

INSTALLATION

When Installing This Product...

1. Read these instructions carefully. Failure to follow them could damage the product or cause a hazardous condition.
2. Check the ratings given in the instructions and on the product to make sure the product is suitable for your application.
3. Installer must be a trained, experienced service technician.
4. After installation is complete, perform the check out procedure.



WARNING

Electrical Shock Hazard.

Can cause severe injury, death or property damage.

Disconnect power supply before beginning wiring or making wiring connections to prevent electrical shock or equipment damage.

Location

Locate the T631 controller about 5 ft. (1.5 m) above the floor in an area with good air circulation and average temperature. The controller mounts on any flat surface or on switch box with screws through back of case. Do not locate T631 on an outside wall, or where the controller will be affected by drafts or radiant heat from the sun.

Mounting On Flat Surface or Switch Box

1. Remove cover by unscrewing single screw in cover.
2. Remove appropriate knockout for wiring.
3. Attach controller to mounting surface or switch box.

NOTE: A wooden panel should be placed between the controller and the mounting surface if the surface is brick, metal, or concrete.

4. Run wires through the knockout and into the controller case.